

Foundation Seebüll Ada and Emil Nolde
 Seebüll 31, 25927 Neukirchen
 Phone +49 (0) 4664-98 39 30
 info@nolde-stiftung.de
 nolde-stiftung.de
 Daily 10 a.m. - 6 p.m.
 March 1 - October 31, 2023



ADMISSION

ADULTS 12 €
REDUCED upon proof 8 €
GROUPS from 10 persons per person 10 €
CHILDREN up to 6 years free
PUPILS from 7 years + students 8 €
FAMILY TICKET (2 adults, 3 children) 24 €
COMBI-TICKET TØNDER in cooperation with
 Kunstmuseet i Tønder 18 €
ANNUAL TICKET SEEBÜLL (not transferable) 50 €

ACCESS

The Forum as well as the garden are barrier-free.
 The Nolde House has a step-free access after the renovation in
 accordance with the preservation order.

Dogs are welcome in Seebüll.
 Only in the historic Nolde House they are not allowed
 (exception: assistance dogs).

GUIDED TOURS AND PAINTING SCHOOL

for adults and children, school classes and
 kindergarten groups
 Phone +49 (0) 4664-98 39 30
 besucherservice@nolde-stiftung.de

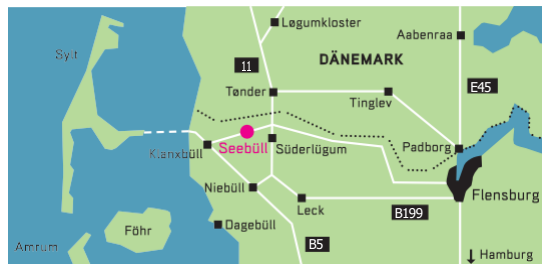
MUSEUM GASTRONOMY "ELEMENT"

Gastronomy – Fine Foods – Events
 Phone +49 (0) 4664-98 39 70
 info@element-seebuell.de



Visit us on Instagram & Facebook and subscribe
 to our newsletter!

© 2023 Nolde Foundation Seebüll



"This is our place!"
Ada and Emil Nolde were delighted
when they found the spot they
called Seebüll in 1926 after a long
search.

After the renovation in accordance with
the preservation order, Seebüll shines in
the most beautiful blaze of color. In the
Künstlerhaus (Artist's House) we show
the 67th annual exhibition "World and
Homeland".

The Seebüll residential and studio house of the
 great painter Emil Nolde offers visitors a unique
 art experience - and so much more! Located in
 idyllic surroundings at the gates of Sylt, the art
 and the magnificent artist's garden invite you to
 linger.

The museum gastronomy "Element" awaits
 you with regionally and internationally
 inspired delicacies.

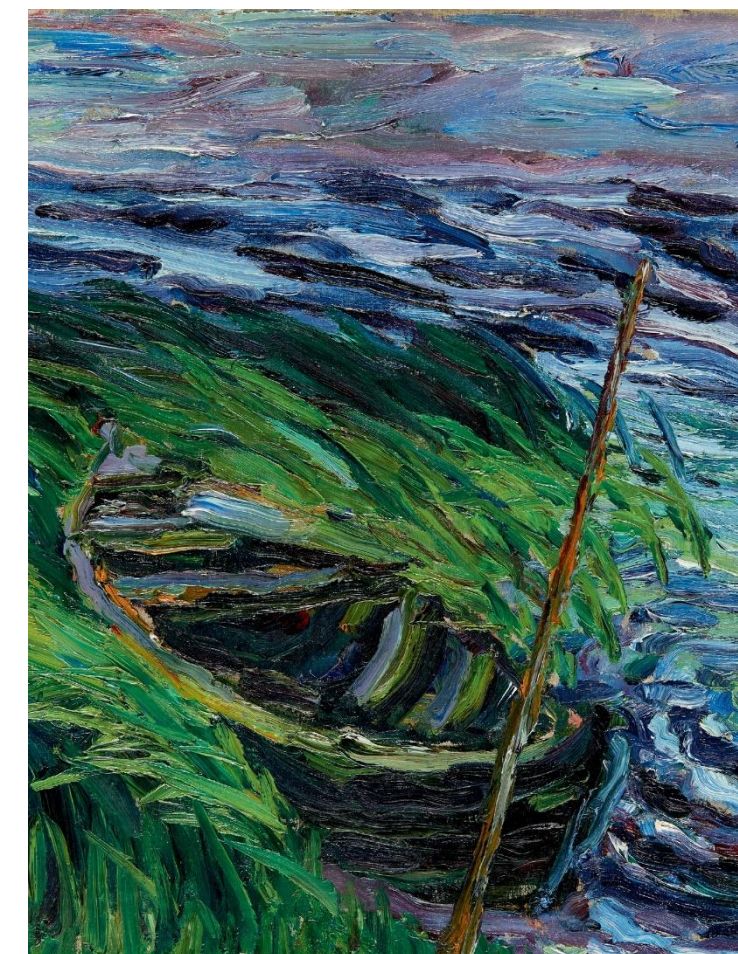
Children will be delighted by the imaginative
 playground. Painting courses are offered for
 children, teenagers and adults. In the nearby
 surroundings, charming walking trails entice you
 to enjoy nature. At the bathing place "Hülltoft
 Tief" ("Hülltoft Trough") you can jump into the
 cool water.

Daily 10 a.m. – 6 p.m.
March 1 - October 31, 2023



VISIT EMIL NOLDE
IN HIS
NORTH FRISIAN
HOMELAND

Nolde.

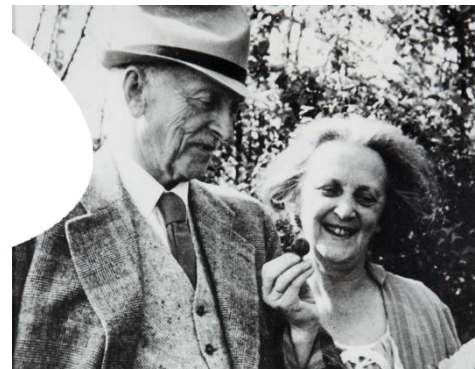


Cover image:
 "Boat among Rushes"
 (detail),
 1909, oil on canvas

Nolde.
 Nolde Museum Seebüll



Emil Nolde, around 1940



Emil and Ada Nolde in the garden, 1941

EMIL NOLDE THE WORLD-FAMOUS EXPRESSIONIST

Like no other, the painter Emil Nolde (1867–1956) was able to translate the tension and intensity of the moment into color. At his last place of residence Seebüll, annually changing exhibitions provide comprehensive insight into his work.

The farmer's son Emil Hansen named himself as an artist after the village in which he was born in 1867: Nolde. Today he is regarded worldwide as one of the most important expressionist painters and as a virtuoso watercolorist. Even if he traveled with pleasure and far - 1913/14 up to the South Seas - and spent the winters in Berlin, the original marshlands of North Friesland remained his home, without which his work is unthinkable.

In 1926, he discovered Seebüll, where he built a residential and studio house from 1927 according to his own plans. In their will, Ada and Emil Nolde stipulated that the Gesamtkunstwerk (Total Work of Art) be made accessible to the public after their death.

SEEBÜLL THE GESAMTKUNSTWERK SEEBÜLL

It was Emil Nolde's express wish to make his artistic work and his Seebüll house with the garden accessible to visitors. Ada and Emil Nolde wrote in their will that "in our small estate in rural, simple nature ... the searching, spiritual wanderer from all lands [should] find a modest, special place where he is given some happiness and artistic-spiritual recreation."

After the costly renovation in accordance with the preservation order, the residential and studio building radiates: a feast of colors! The 67th annual exhibition "World and Homeland" returns to the Nolde House. See the paintings as once Emil and Ada Nolde in the Hall of paintings, enter Nolde's studio with the main work "The Life of Christ" from 1911/12. About 120 works of the color magician Nolde are on display. In the Forum we show a documentation about the house and its renovation.

Nowhere else can you get a more comprehensive insight into the work of Emil Nolde. His estate with the world's largest Nolde collection is located here.



"Light Dahlias and Sunflowers", 1943
Oil on canvas

ART AND NATURE THE PARADISIACAL INSPIRATION

Ada and Emil Nolde planted a lush flower garden at the same time they began building their house. The path through the garden traces the couple's initials, A and E. As it did during Nolde's lifetime, the garden changes its brilliant colors throughout the year.

The historic Nolde garden and the North Frisian marshland provided the artist with endless inspiration. "Like a fairy tale, the homeland was to me, the parental home in the flat land, my country," he writes with emotion, "my wonderland from sea to sea ..."



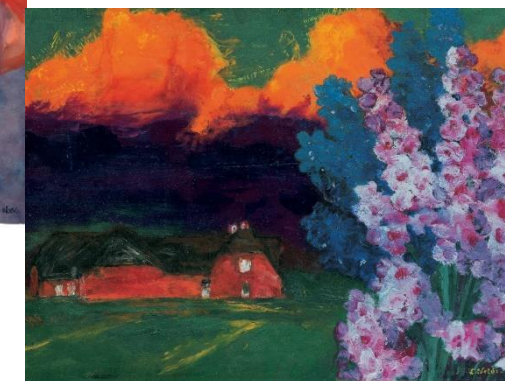
Haus Seebüll with Hayricks, around 1940, watercolor



Ada Nolde, watercolor



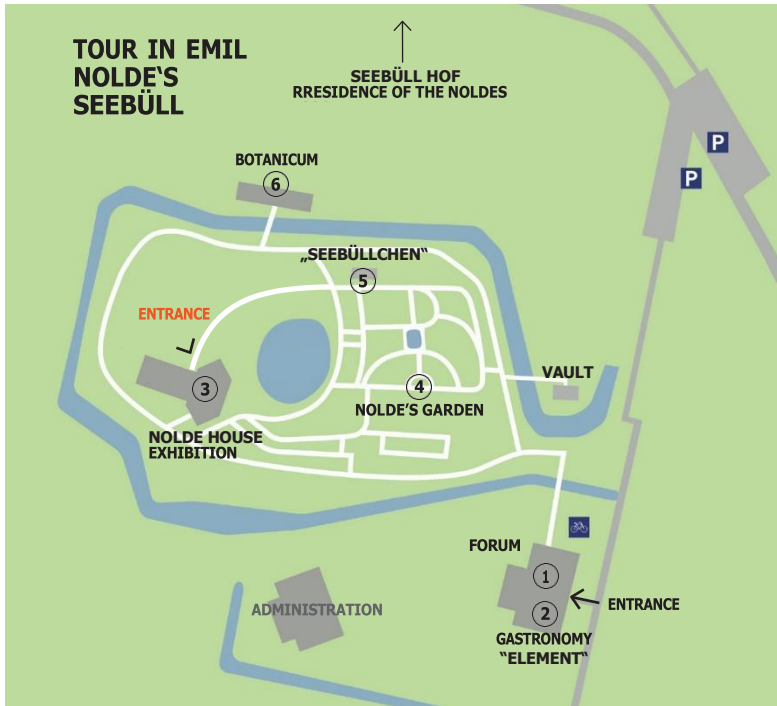
Girl with Red Hat, watercolor



"Close Evening", 1930, oil on plywood

EXPERIENCE
EMIL NOLDE
IN SEEBÜLL.
BACK AT
HOME!

Nolde.



FORUM

1 A tour in Seebüll begins and ends in the entrance area of the **VISITOR'S FORUM**. Here you can get all the information and register for guided tours and the painting school. In the **MUSEUM SHOP** you will find literature and selected products from local suppliers about the art and life of Ada and Emil Nolde.

In addition to biographies of Ada and Emil Nolde, you will find exhibition catalogues and children's books, posters and art cards. Seeds from the historic Nolde garden are also on sale. And don't forget, here is the **TOILET**.

On the **UPPER FLOOR OF THE FORUM** you can expect biographical information about Emil Nolde, which can be deepened in the **FILM "PAINTER AND MYTH"**. In addition, we will show a documentary exhibition on the extensive renovation of the **RESIDENTIAL AND STUDIO HOUSE 2020–2022**, which illustrates Nolde's original idea and the careful reconstruction. Here you will also find the **PAINTING SCHOOL**.

GASTRONOMY "ELEMENT"

② Enjoy the regionally and internationally inspired delicacies of the Museum's Gastronomy "Element" with a white view of the magnificent landscape of North Frisia.

NOLDE HOUSE OPEN AGAIN!

③ The Seebüll residential and studio house, designed by Emil Nolde himself, is an outstanding modernist artist's residence. In their will, Ada and Emil Nolde stipulated that the Gesamtkunstwerk be made accessible to the public after their death. The renovation, which is in keeping with the preservation order, allows an almost intimate encounter with the art and life of Ada and Emil Nolde. Here you can see the **67th ANNUAL EXHIBITION "WORLD AND HOMELAND"** with about 120 works. You can see the oil paintings like once Emil Nolde himself in the Hall of Paintings. We welcome the high quality works of the **DONATION PROFESSOR HERMANN GERLINGER** in the collection of the Nolde Foundation.

NOLDE'S GARDEN

④ At the same time as the house was built in 1927, Ada and Emil Nolde laid out a magnificent flower garden. Only insiders knew that the path through the garden follows the couple's initials – A and E – which is clearly visible in the ground plan. Nolde painted directly with the easel standing among the flowers in his "little paradise" numerous paintings and watercolors of flowers, others were created or completed in the studio.

⑤ In the garden house **"SEEBÜLLCHEN"** the Noldes enjoyed many hours. The modern **BOTANICUM** serves to research and preserve the authentic planting of the historic Nolde garden. Here the visitor can purchase a memento of this paradise: ⑥ seedlings from Nolde's garden.



Nolde.

Cover image:
Emil and Ada Nolde in the garden,
1941

WELCOME IN SEEBÜLL



Ada and Emil Nolde
in the garden, 1941

**EXPERIENCE
EMIL NOLDE
IN SEEBÜLL.
BACK AT
HOME!**

Nolde.



THE PAINTER EMIL NOLDE realized a dream with the construction of the residential and studio house he designed himself and the garden he laid out from 1927. In the vastness of the North Frisian landscape he found the peace to work and the inspiration for his art; here his work could find a permanent home. The idiosyncratic architecture, the works of the great expressionist and the magnificent flower garden form a total work of art.

It was the wish of the Nolde couple that their house should be opened to the public as a museum, so that "in our small estate in rural, simple nature ... intellectual searchers from all nations may find a modest, yet special place that would give them a little happiness and artistic, spiritual recovery".

Nowhere can one get to know the painter and the man, his life and his art better than in Seebüll. We wish visitors from near and far an unforgettable stay in the living world of Ada and Emil Nolde. The Nolde House with the historic living quarters is open again!

**„This is our place!“
Ada and Emil Nolde were delighted
when they found the spot they
called Seebüll in 1926 after a long
search.**

Foundation Seebüll Ada and Emil Nolde
Seebüll 31, 25927 Neukirchen
Phone +49 (0) 4664-98 39 30
info@nolde-stiftung.de
nolde-stiftung.de

Daily 10 am – 6 p.m.
March 1 – October 31, 2023



ACCESS

The Forum as well as the garden are barrier-free. The Nolde House has a step-free access after the renovation in accordance with the preservation order.

Dogs are welcome in Seebüll. Only in the historic Nolde House they are not allowed (exception: assistance dogs).

GUIDED TOURS AND PAINTING SCHOOL

for adults and children, school classes and kindergarten groups
Phone +49 (0) 4664-98 39 30
besucherservice@nolde-stiftung.de

MUSEUM GASTRONOMY „ELEMENT“

Gastronomy – Fine Foods – Events
Phone +49 (0) 4664-98 39 70
info@element-seebuell.de



Visit us on Instagram & Facebook and subscribe to our newsletter!

© 2023 Nolde Foundation Seebüll



Nolde.
Nolde Museum Seebüll